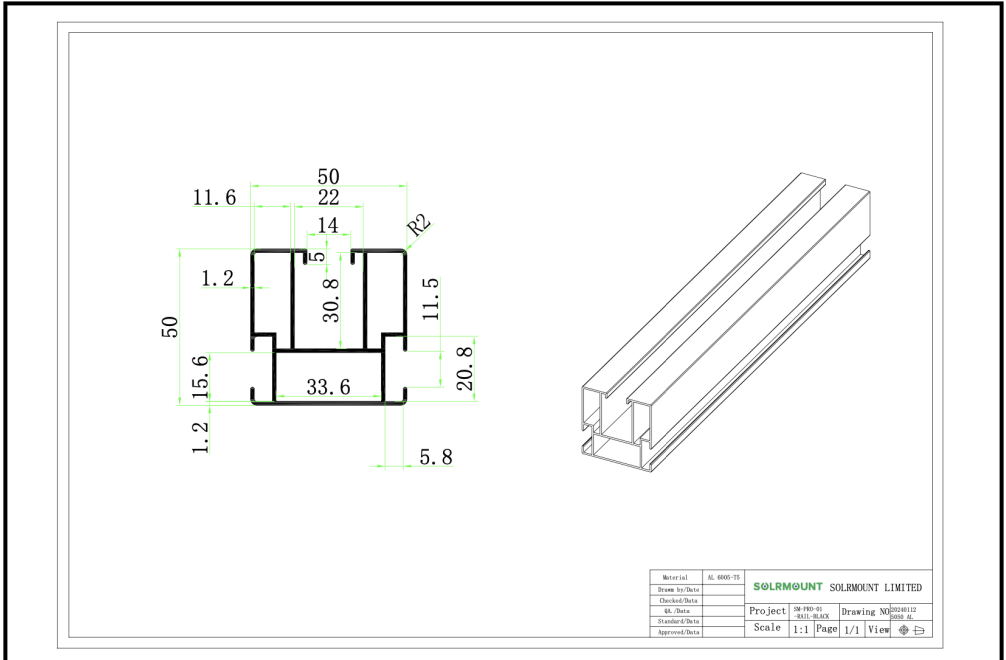


Component SM-PRO-01-RAIL-BLACK



Technical Specification

Roof application	Pitch roof
Dimensions	W50*H50
Weight	Theoretical weight 2.46kg/3.64kg
Length	2420mm/3585mm
Colour	Black oxidation or Silver Silver oxidation
Material	AL06005-T5
Wind speed	<60m/s
Snow load	<1.4kn/m ²
Standards	GB50797/AS NZS1170.2-2011 EN1991, ASCE7-10 JIS C 8955

